

END POST WHITE
76x50x2700mm (3"x 2")

END POST SILVER GREY
76x50x2700mm (3"x 2")

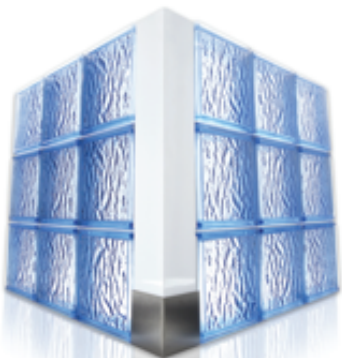
END POST BOSS SECTIONS SATIN / POLISHED



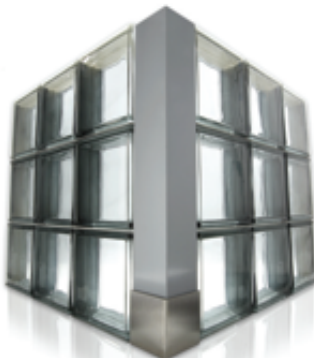
CORNER POST WHITE
76x76x2700mm (3"x 3")

CORNER POST SILVER GREY
76x76x2700mm (3"x 3")

CORNER POST BOSS SECTIONS SATIN / POLISHED



Mulia Icescape Blue block, white Corner Post and polished Boss Section



Mulia Grey Transparent block, silver Corner Post and satin Boss Section



SGD Flemish and Flemish Corner blocks in Rose, Blue and Bronze



Glass tiles by
glass
tiles.co.uk

Mulia Grey Cross Reeded. Constructed with Easifix, Colmef Vetromix grout finish, silver grey End Post and polished Boss Sections.

Shower Screens

Shower screens can be constructed using either Rods & Mortar or Easifix. To consider Precast Easifix, consult technical.

Hints:

1. Panel should be restrained to the base and at least two vertical sides (jamb).
2. It is not recommended to have shower screens free standing
a) for safety and stability and
b) aesthetic reasons.
3. Glass blocks can sometimes be built off the tray. Most are constructed off the floor or a plinth is constructed.

Key:

- a) The panel was constructed from Easifix ensuring a neat 4mm joint.
- b) The panel was restrained to the floor and back wall and tied into the bulkhead.
- c) An end post was used to create the fix for a secondary vertical jamb.
- d) The holes for the anchor brackets were pilot holes pre-drilled into the aluminium end post.
- e) 12 blocks mean 48 drill holes were required. Alternatively Easifix sleeve and timber could be used.
- f) A mastic seal was used to allow the panel to expand & contract and also as a water tight seal.
- g) The end post duals as a secondary vertical restraint, whilst allowing the shower screen frame to be attached to it.
- h) A plinth was built to elevate the glass blocks to the same height as the shower tray.

