

LaRochere Blue Bubble blocks.  
Constructed with Rods & Mortar,  
white End Posts and satin Boss Sections.

### Safewall - End Post

Glass block panels should be secured into a minimum of three sides, preferably four to obtain maximum strength.

When building a screen or shower enclosure the panel is generally at 90° to the wall it is tied or connected to. If the opposite vertical edge is exposed an end post can be used creating a secondary vertical edge/jamb to restrain and increase stability (prior to glass block construction).

At the top of the glass blocks, if not built to the ceiling, either a timber and plasterboard bulkhead can be formed, alternatively end glass blocks can be considered. An end post is 2700mm long and is cut to size to suit the floor-to-ceiling height on site. It is a 3" x 2" (75mm x 50mm) rectangular box profile extruded from aluminium. Available as standard in gloss white (Ral: 9010) or a silver grey (Ral: 9006), the paint finish is powder coated which is extremely durable.

### Safewall - Corner Post

The safewall corner post offers a solution for connecting two glass block panels around a 90° corner, allowing all manner of glass block features to be created:

The panel could be straight, a corner post and the secondary panel may be straight or curved, connecting to a wall.

The panel could be straight, a corner post and the secondary panel may be straight or curved, connected to an end post or end glass blocks. Alternatively the secondary panel may be supported just at the base and the exposed edge stepped down using a combination of end and double end glass blocks.

Two sets of corner posts may be used to link three glass block panels together to create an enclosed space like a large walk in shower.

A corner post is 2700mm long and is cut to size to suit the floor-to-ceiling height on site. It is 3" x 3" (75mm x 75mm) square box profile extruded from aluminium. Available as standard in gloss white (Ral: 9010) or a silver grey (Ral: 9006), the paint finish is powder coated which is extremely durable.

Stainless steel end posts and corner posts can be supplied to order but are more expensive by comparison.



### How to fit an End Post

An end post is secured in place by two specially fabricated boss sections, one screwed to the floor and other to the ceiling, the post then slides in and locates. The boss sections are available in either brushed satin or a high polished stainless steel finish.

The end post has to be positioned prior to constructing glass blocks.

To use Rods & Mortar in conjunction with an end post the horizontal reinforcement bars are drilled and inserted into the post (apply a dab of silicone to the hole).

When using Easifix, it is advisable to secure the Easifix sleeve and timber to the end post and screw the anchor brackets to the timber rather than screw the anchor bracket to the end post.

**Note:**

End posts carry no fire rating so cannot be used as part of fire-resistant glass block wall.

An end posts can only be used in conjunction with 80mm-thick glass blocks.

### How to fit a Corner Post

A corner post is secured in place with two specially fabricated boss sections, one screwed to the floor and other to the ceiling. The post then slides in and locates. They boss sections are available in either brushed satin or a high polished stainless steel finish.

The corner post must be positioned prior to constructing the glass block panels.

To use Rods & Mortar in conjunction with a corner post the horizontal reinforcement bars are drilled and inserted into the post (apply a dab of silicone to the hole). When using Easifix, it is advisable to secure the Easifix sleeve and timber to the corner post to make building easier and to screw the anchor brackets to the timber. This is more straightforward than trying to screw fix the anchor bracket to the corner post.

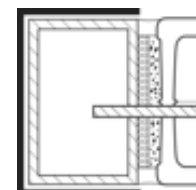
An alternative to using safewall corner post is the range of corner glass blocks.

**Note:**

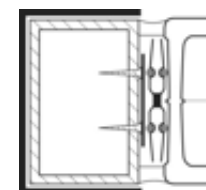
Corner posts carry no fire rating so cannot be used as part of fire-resistant glass block wall.

A corner post can only be used in conjunction with 80mm-thick glass blocks.

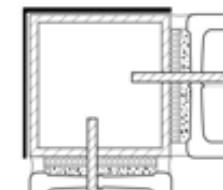
Rods & Mortar



Easifix without Easifix Sleeve & timber



Rods & Mortar



Easifix without Easifix Sleeve & timber

