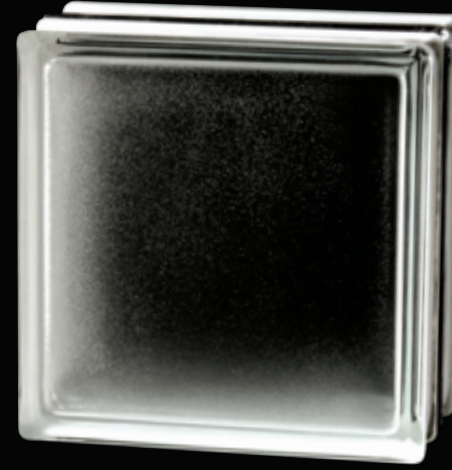


Flemish (TF30N)



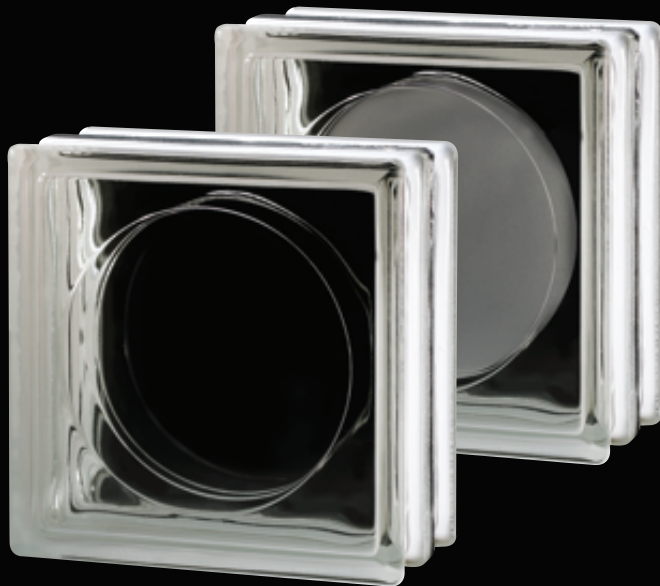
Transparent (TF30T)



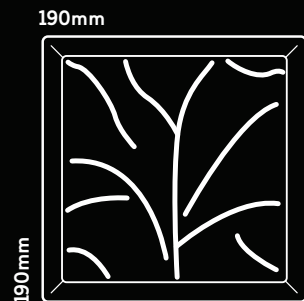
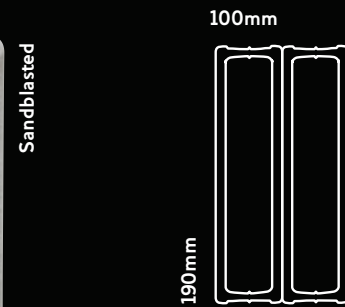
Frosted (TF30S)



Bubble (TF30BU)



Transparent Alpha (TF30TA)



<b>Dimensions</b>	190x190x100mm
<b>Light Transmission</b>	78%
<b>Weight</b>	4kgs
<b>Patterns Available</b>	Flemish (TF30N), Transparent (TF30T), Frosted (TF30S), Bubble (TF30BU), Transparent Alpha (TF30TA)
<b>Thermal Transmission</b>	U value = <math><2.0 \text{ W/m}^2\text{°C}</math>
	(Achieved when panel is constructed using lightweight mortar.)
<b>Sound Absorbency</b>	48 - 53 dB (Dependant upon frequency)
<b>Fire Rating</b>	60 minutes fire integrity & 30 minute thermal isolation

**Specification of TF30 Glass Block**

<b>Maximum Panel Size</b>	9m <sup>2</sup> with width or height not exceeding 6m in either direction. The panel was tested 15 blocks wide x 15 blocks high.
<b>Joint Reinforcement</b>	Two number ø6mm (nominal) stainless steel reinforcement rods both horizontally & vertically.
<b>Expansion Material</b>	10mm width. Bitumen fibre to base and expansion foam to head & jambs, caulked over with fire stop silicone.

